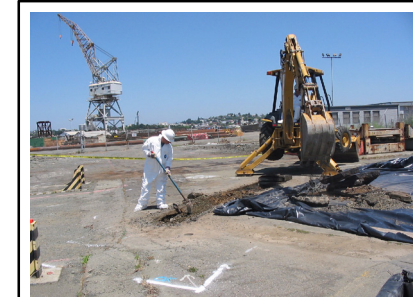


CH2M HILL prepares to conduct indoor air sampling in Building 84, the former Brig.



A trench was advanced north of Berth 20 in IA C3 on May 26, 2005. This trench was advanced at the request of DTSC as part of the investigation of shallow soil surrounding dry docks and berths in IA C3. No unusual observations were made in the subsurface during trenching activities.



CH2M HILL subcontractors prepare for work in Building 680

Documents in Review	Upcoming Documents	Milestones
Land Use Covenants for PCB Sites in IA D1.2	Draft Removal Action Work Plan for IR21 in IA C2	Four PCB Sites Closed
Draft Remedial Action Plan for IA B		
Interim Removal Action Work Plan for Industrial Wastewater Pump Station No. 4	Land Use Covenant and Implementation Plan for IA D1.2	

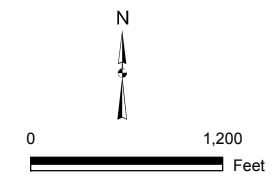
New Issues of Concern	Upcoming Public Comment Periods	Environmental Site Closure Status
None	Public Comment Period for IA C3 Remedial Action Plan, (On hold pending additional characterization work in IA C3) Interim Removal Action at Industrial Wastewater Pump Station No. 4	364 of 570 PCB Sites Closed by DTSC and EPA 63 of 112 USF Sites Closed by RWQCB 55 of 111 FOPL Segments Closed by RWQCB

LEGEND

- PCB SITES
- IWPS PUMP STATIONS
- INVESTIGATION AREA
- FUEL OIL PIPELINE
- INDUSTRIAL WASTEWATER PIPELINE (IR14)
- ROADS
- STRUCTURES
- WATER
- WETLANDS
- EETP

FOUR KEY STAGES OF CLEANUP

- SURVEY & SAMPLING
- REMEDIAL INVESTIGATION / FEASIBILITY STUDY
- REMEDIAL ACTION / CLEANUP
- PENDING CLOSURE / CLOSED



FEATURES WITHIN THE EETP
 JUNE 2005 RAB UPDATE
 LENNAR MARE ISLAND, VALLEJO CALIFORNIA