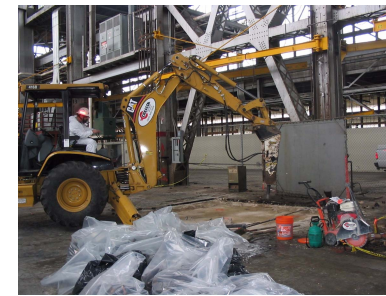


Removing Former Electrical Transformer at B459



Close-up of Vacuum Truck used to Evacuate Manholes and Pipelines



Scabbling Floor to Remove PCBs in Concrete inside B680



Removing PCB-Contaminated Concrete at Former Ways Area



Removing Lead-Contaminated Soil at H73

Documents in Review	Upcoming Documents	Milestones
Crane Test Area Removal Action Work Plan, IA B	Draft Removal Action Work Plan for IR21 in IA C2	Completed Public Comment Period and Finalized PCB Work Plan
	Draft Remedial Action Plan for IA B	
Draft Remedial Investigation for IR14 in IA C2	Interim Removal Action Work Plan for Industrial Wastewater Pump Station No. 4	

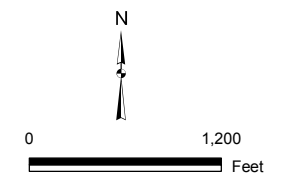
New Issues of Concern	Upcoming Public Comment Periods	Environmental Site Closure Status
None	Public Comment Period for IA C3 Remedial Action Plan, May 2005	347 of 570 PCB Sites Closed by DTSC and EPA 63 of 112 USF Sites Closed by RWQCB 55 of 111 FOPL Segments Closed by RWQCB

LEGEND

- PCB SITES
- IWPS PUMP STATIONS
- INVESTIGATION AREA
- FUEL OIL PIPELINE
- INDUSTRIAL WASTEWATER PIPELINE (IR14)
- ROADS
- STRUCTURES
- WATER
- WETLANDS
- EETP

FOUR KEY STAGES OF CLEANUP

- SURVEY & SAMPLING
- REMEDIAL INVESTIGATION / FEASIBILITY STUDY
- REMEDIAL ACTION / CLEANUP
- PENDING CLOSURE / CLOSED



FEATURES WITHIN THE EETP
MARCH 2005 RAB UPDATE
LENNAR MARE ISLAND, VALLEJO CALIFORNIA