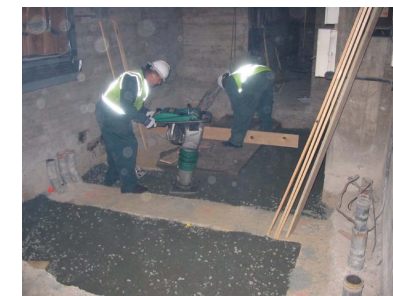


- Removal of lead contaminated soil around 10 structures in IA D1.2
 - IR14 IWP Video Inspection

Building 84A
 - PCB Impacted Concrete Removal
 - Verification Sampling

H83
 PCB Impacted Concrete Removal



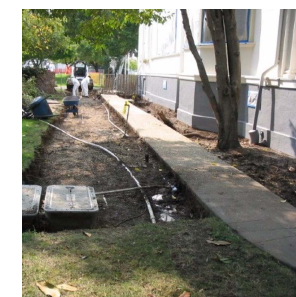
Site Restoration following Soil Removal at PCB Site in Building 521



Soil Removal at FOPL Segment on South Side of Building 388



Example of Soil Removal Using Combination of Mechanized Equipment and Hand Excavation around Building P located on Kansas Street



Soil Removal on South Side of Building O located on Walnut Avenue



Soil Removal on South Side of Building P located on Kansas Street

Documents in Review	Upcoming Documents	Milestones
IA C1 Remedial Investigation / Feasibility Study	Draft Remedial Investigation for IR14 in IA C2	One PCB Site Closed by DTSC and EPA
B690 Remedial Investigation and Interim Removal Action Summary Report IWPS No. 1 Interim Removal Action Summary Report	Draft Remedial Action Plan for IA C3	
IR11/B866 Remedial Investigation Report	Draft Removal Action Work Plan for Crane Test Area	One FOPL Segment Closed by RWQCB

New Issues of Concern	Upcoming Public Comment Periods
Chemical contamination associated with excavated debris along the historic shoreline in IA D1	Public Comment Period for IA C3 RAP, January 2005
	Public Comment Period for the PCB Work Plan, November 2005

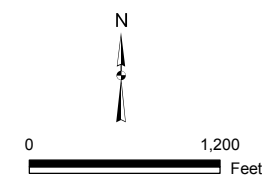
Environmental Site Closure Status
319 of 570 PCB Sites Closed by DTSC and EPA
63 of 112 UST Sites Closed by RWQCB
55 of 111 FOPL Segments Closed by RWQCB

LEGEND

- PCB SITES
- INVESTIGATION AREA
- SANITARY SEWER PIPELINE WITHIN IA'S B, C1, AND C2
- FUEL OIL PIPELINE
- ROADS
- STRUCTURES
- WATER
- WETLANDS
- EETP

FOUR KEY STAGES OF CLEANUP

- SURVEY & SAMPLING
- REMEDIAL INVESTIGATION / FEASIBILITY STUDY
- REMEDIAL ACTION / CLEANUP
- PENDING CLOSURE / CLOSED



FEATURES WITHIN THE EETP
 OCTOBER 2004 RAB UPDATE
 LENNAR MARE ISLAND, VALLEJO CALIFORNIA