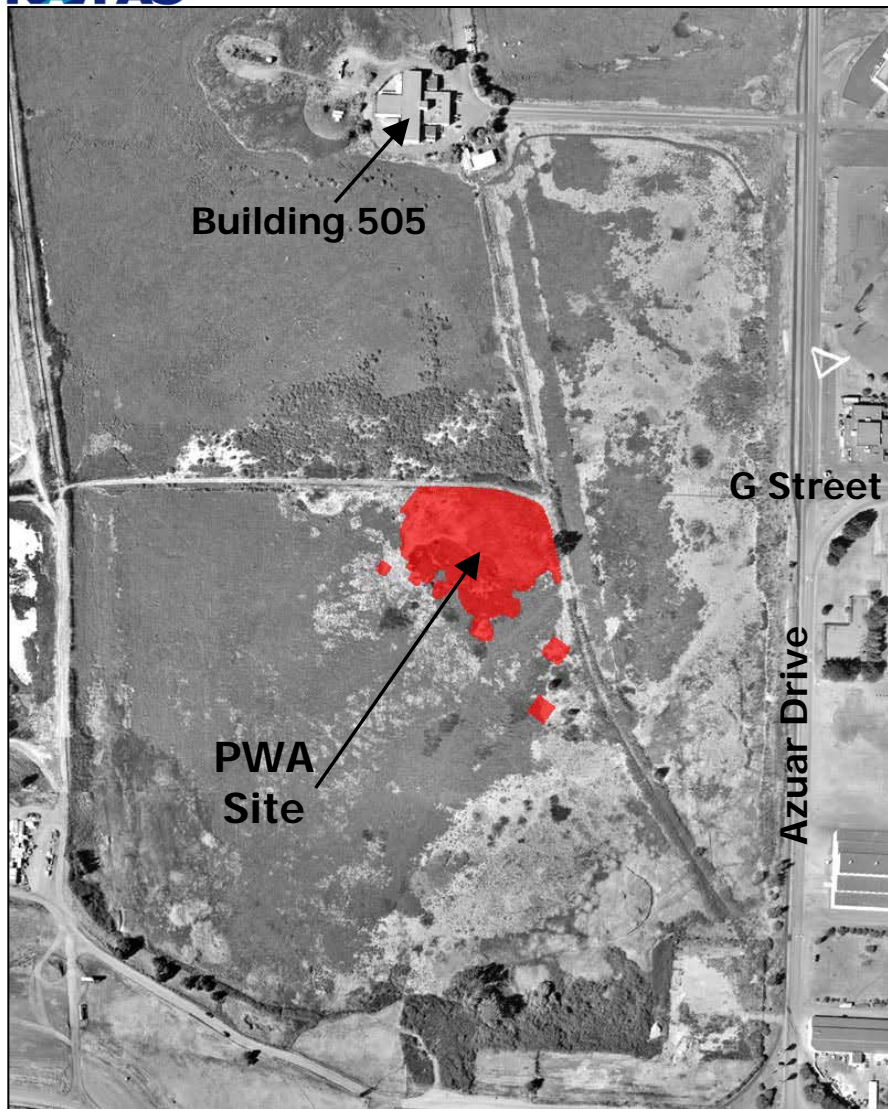




Paint Waste Area (PWA) Site History



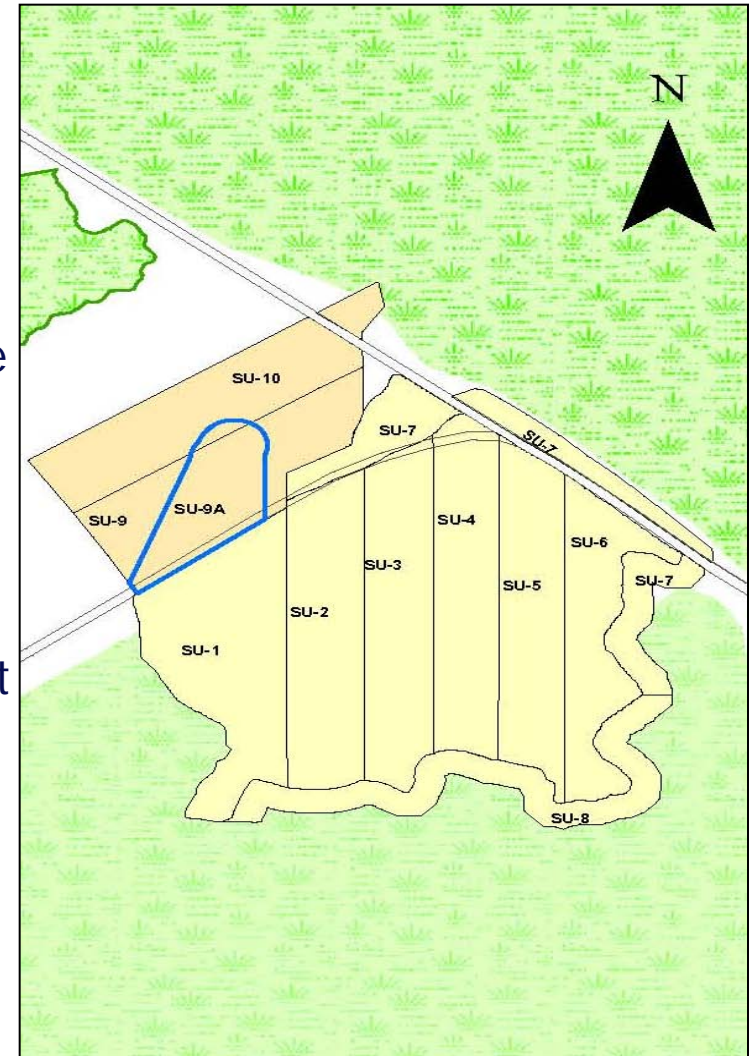
- Located in a pre-WWII dredge fill
- Surface debris led to initial classification as a suspected paint waste disposal site
- Low-level radiological (RAD) items and munitions and explosives of concern (MEC) also encountered
- 2009-2010 – Removal action at 3.6 acres completed
 - 17 MEC and 1,178 RAD items recovered
 - Additional items were found at the perimeter prompting further work in 2011



Paint Waste Area



- 2011 activities:
 - Investigation of metallic and RAD anomalies within SU-9/10
 - Excavation and manual screening of soil for MEC and RAD items in the area where perimeter items were found
 - 36 MEC and 19 RAD items recovered
 - Most items and more debris in eastern half of excavation
 - Excavation stepping out to north and east
 - Work on-hold pending approval of an Explosive Safety Submission amendment to add a mechanical screening process





Paint Waste Area

